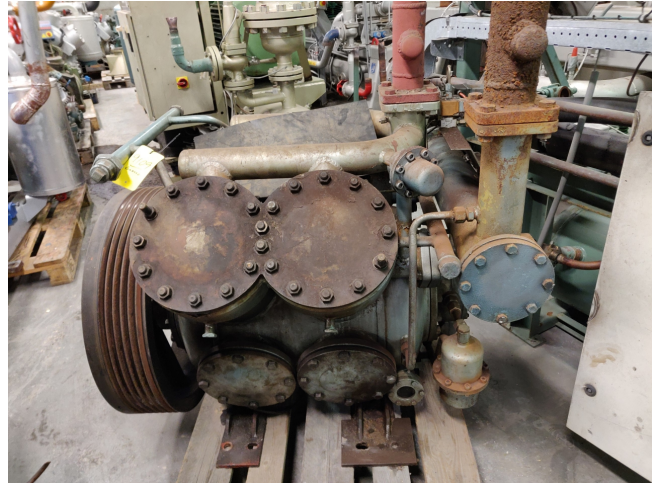


# Grasso RC 411

## Specifications

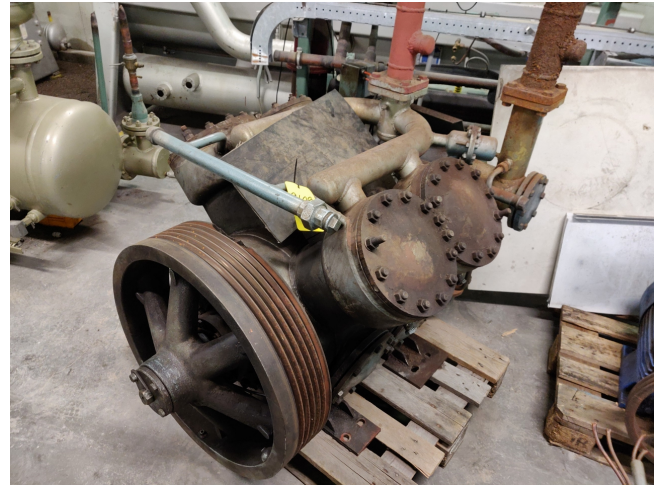
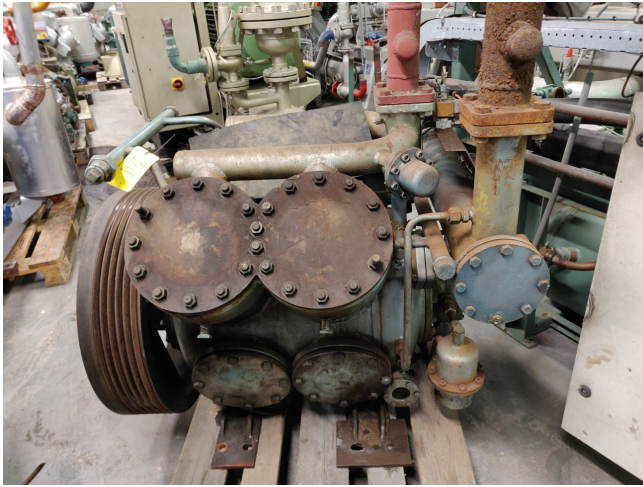
Merk	Grasso
Type	RC 411
Koudemiddel	NH 3 (ammonia)
kW at +10°C/+40°C	660
kW at 0°C/+40°C	441.82
kW at -5°C/+40°C	354.71
kW at -10°C/+40°C	278.89
Opmerkingen	985 RPM / 380 V // capacity based on 1000 RPM see pdf
Stock	1




## Description

### Used Grasso RC 411

Gebruikte Grasso RC 411 eentrapscompressor. Onze capaciteitstabel is gebaseerd op NH3. Voor alle andere specificaties (indien beschikbaar), zie de afbeelding van het typeplaatje van de fabrikant of het bijgevoegde pdf-bestand. \* Waarom kiezen voor HOSBV? We waren niet alleen de grootste specialist in gebruikte koeling in Europa, maar we leveren ook alle apparatuur, inclusief een uitgebreide test, garantie en industriële reiniging. \* Optioneel kunnen we ook een nieuwe verfbeurt uitvoeren en de logistiek regelen.

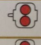
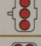
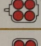




**NH<sub>3</sub>**  **RC 411**  
n = 1000 rpm

Single-stage

↓ t <sub>1</sub> (°C)	↓ Δt <sub>1</sub> (K)	t <sub>2</sub> (°C)	+20	+25	+30	+35	+40	+45
+10	0	Q <sub>e</sub> (kcal/h)	—	645 500	624 900	603 700	581 900	559 400
	5		—	629 800	609 500	588 900	567 500	545 600
	10		—	614 800	595 300	575 100	554 200	532 800
—	—	P <sub>e</sub> (kW)	—	68.8	80.0	91.8	104.1	116.6
+5	0	Q <sub>e</sub> (kcal/h)	553 900	536 200	517 800	498 900	479 200	459 000
	5		540 500	523 200	505 300	486 800	467 600	447 900
	10		528 000	511 100	493 600	475 900	456 800	437 600
—	—	P <sub>e</sub> (kW)	59.6	69.4	79.8	90.6	101.6	112.6
0	0	Q <sub>e</sub> (kcal/h)	456 800	441 000	424 500	407 500	389 900	371 600
	5		445 100	429 700	413 700	396 800	379 900	362 100
	10		435 000	419 900	404 300	388 000	371 200	353 900
—	—	P <sub>e</sub> (kW)	60.0	69.1	78.6	88.2	97.7	106.9
-5	0	Q <sub>e</sub> (kcal/h)	372 600	358 400	343 600	328 300	312 300	295 800
	5		363 900	350 000	335 600	320 600	305 000	288 900
	10		355 600	342 100	328 000	313 300	298 100	—
—	—	P <sub>e</sub> (kW)	59.6	67.8	76.1	84.3	92.1	99.2
-10	0	Q <sub>e</sub> (kcal/h)	300 100	287 300	274 000	260 100	245 600	—
	5		293 000	280 500	267 500	254 000	239 800	—
	10		286 500	274 300	261 600	248 300	—	—
—	—	P <sub>e</sub> (kW)	58.2	65.3	72.3	78.8	84.6	—
-15	0	Q <sub>e</sub> (kcal/h)	238 000	226 400	214 300	201 700	—	—
	5		232 400	221 000	209 300	197 000	—	—
	10		227 200	216 000	204 700	—	—	—
—	—	P <sub>e</sub> (kW)	55.8	61.6	67.0	71.5	—	—
-20	0	Q <sub>e</sub> (kcal/h)	185 100	174 600	163 600	—	—	—
	5		180 900	170 600	159 800	—	—	—
	10		176 900	166 800	—	—	—	—
—	—	P <sub>e</sub> (kW)	52.2	56.5	60.0	—	—	—
-25	0	Q <sub>e</sub> (kcal/h)	140 600	130 900	—	—	—	—
	5		137 400	128 000	—	—	—	—
	10		134 400	—	—	—	—	—

Performance table

cylinder arrangement	single-stage						two-stage		
	type		NH <sub>3</sub>	R12	R22	R502	type		NH <sub>3</sub>
	RC 211	Q <sub>0</sub> P <sub>e</sub>	163 34	93 25	157 37	160 47			
	RC 311	Q <sub>0</sub> P <sub>e</sub>	245 50	140 36	236 55	241 70	RC 2111	Q <sub>0</sub> P <sub>e</sub>	45 23
	RC 411	Q <sub>0</sub> P <sub>e</sub>	326 65	186 48	314 73	321 93	RC 3111	Q <sub>0</sub> P <sub>e</sub>	63 31
	RC 611	Q <sub>0</sub> P <sub>e</sub>	490 97	279 70	471 108	481 138	RC 4211 RC 5111	Q <sub>0</sub> P <sub>e</sub> Q <sub>0</sub> P <sub>e</sub>	91 44 92 47
	RC 911	Q <sub>0</sub> P <sub>e</sub>	734 144	418 104	707 164	722	RC 6311	Q <sub>0</sub> P <sub>e</sub>	136 66